

유량감시계 (Sight Glass)

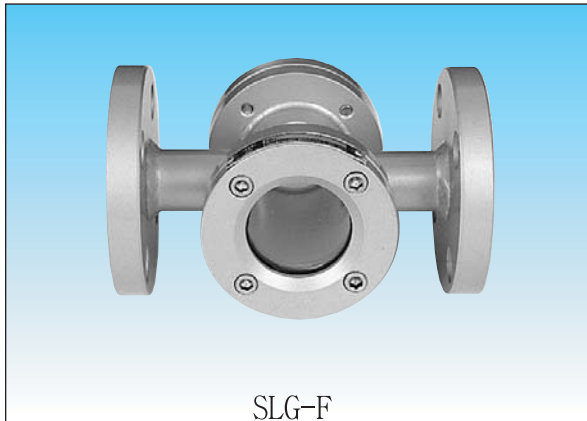
**SLG** Series

SLG-Series 모델 선택 (Model Selection Guide)

SLG			
MODEL	CODE		DESCRIPTION
SLG			SIGHT GLASS
Connection	F		FLANGE
	N		SCREW
Material	B		SUS304
	C		SUS316
	X		Special [주1]
Option	E		Ball in Wire net
	M		Ball in a Round

[주1] 별도협의

## 유량감시계 (Sight Glass)



SLG-F



SLG-N

### ◆ 개요

양면에 Sight Glass를 통하여 유체의 상황을 감시할 수 있으며, 가격도 저렴한 유량 감시계입니다. SLG-N는 Screw 방식이며 SLG-F는 Flange 방식입니다.

### ◆ Description

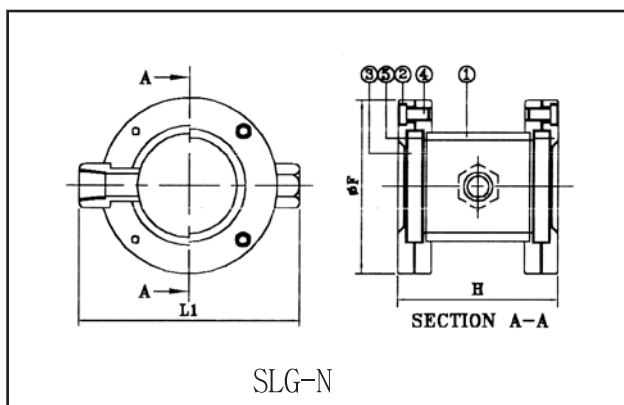
These sight glasses monitor flow state through both side of glass, and are low in cost.

### ◆ 특징

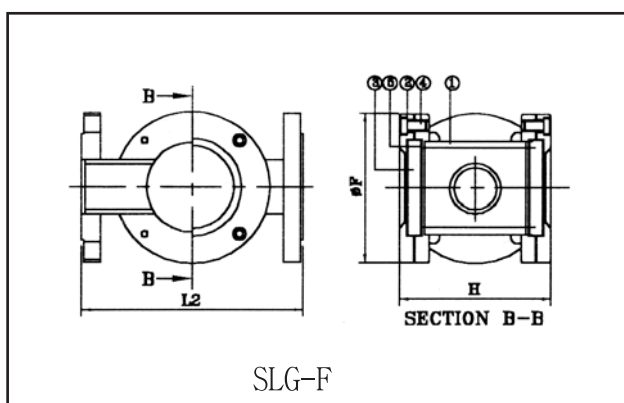
1. 최고사용온도 : 120℃
2. Glass는 Hard Glass
3. 유체의 흐름상황을 간단히 감시합니다.
4. 최고사용압력 : 10kgf/cm<sup>2</sup>G

### ◆ Features

1. Easy to monitor fluid situation.
2. Max. operating temperature : 120℃
3. Max. operating pressure : 10kgf/cm<sup>2</sup>G
4. Material of glass : Hard glass.



SLG-N



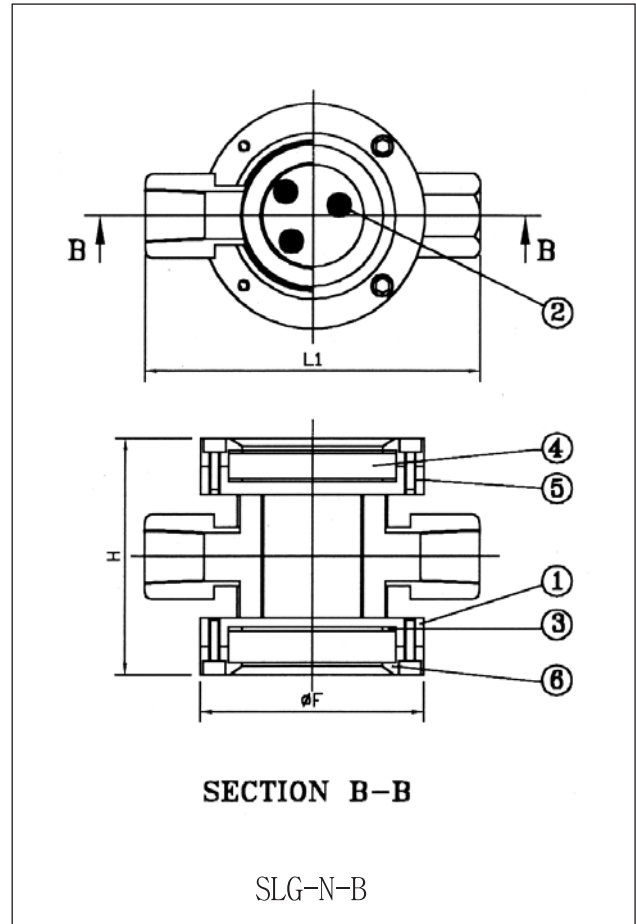
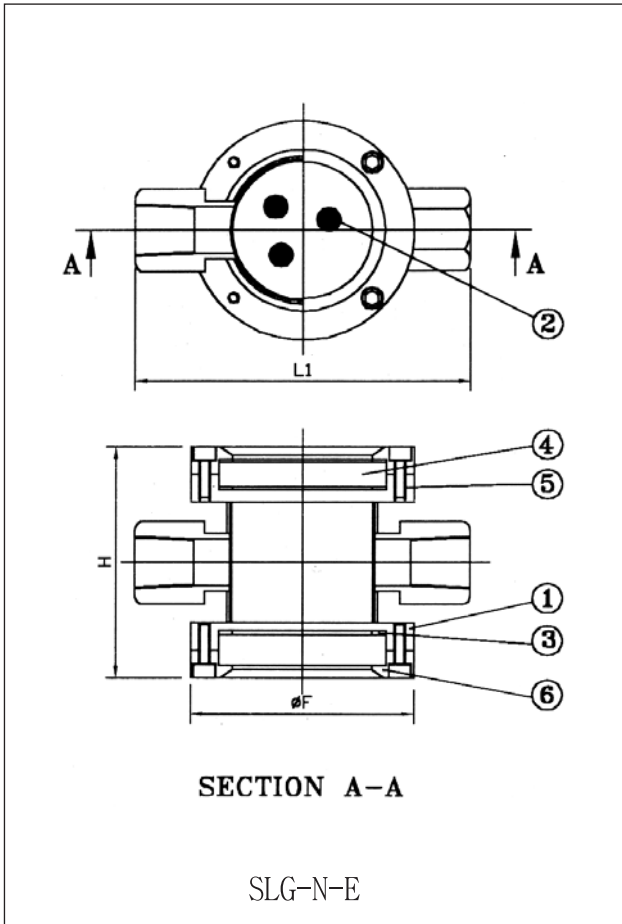
SLG-F

	SIZE	L1	L2	H	ØF
	15A	1/2B	100	160	90
	20A	3/4B	110	180	110
	25A	1B	120	180	120
	32A	1-1/4B	150	180	130
	40A	1-1/2B	160	200	135
	50A	2B	170	220	145
	65A	2-1/2B		270	165
	80A	3B		270	180
	100A	4B		350	210
	125A	5B		380	240
	150A	6B		420	270
	200A	8B		470	320

PART NO.	TITLE	MATERIAL
1	Body	Mat'l Selection
2	Viewing Cover	AL, SUS304, SUS316
3	Spring	Mat'l Selection
4	Bolt	SUS304
5	Packing	NBR, Viton, Teflon

## 유량감시계 (Sight Glass)

### ◆ 표준 규조 및 규격 (Standard Size and Structure)



이 유량계는 Flapper가 없고 내부에 Ball을 넣어 Ball의 움직임을 통하여 유체 상황을 감시하는 유량 감시계입니다.

These sight glasses have a ball inside instead of a flapper and flow situation can be monitored through movement of the ball.

### ◆ Dimension

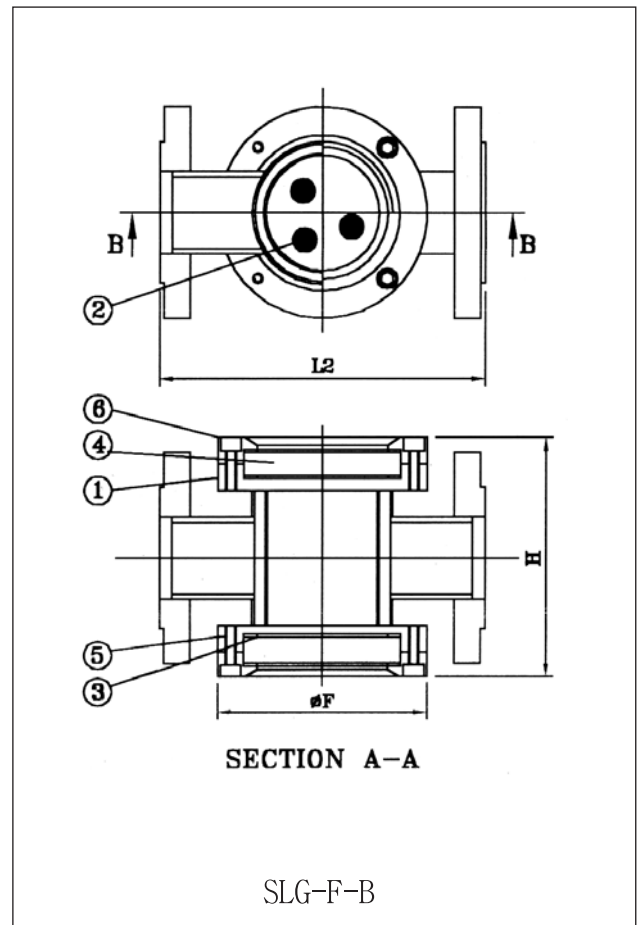
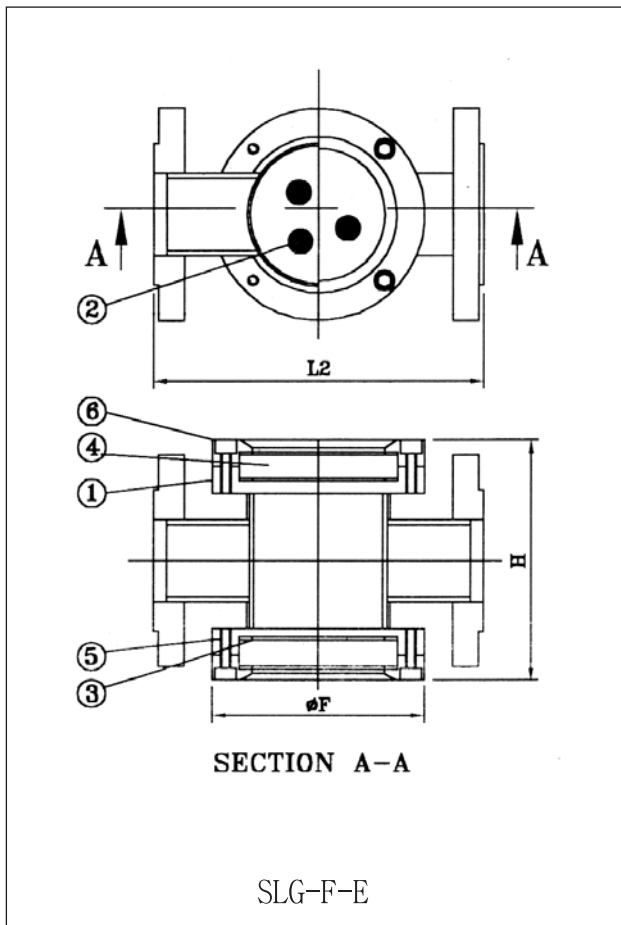
SIZE		L1	H	ØF
10A	3/8B	100	90	90
15A	1/2B	100	95	90
20A	3/4B	110	100	90
25A	1B	120	110	90
32A	1-1/4B	150	120	100
40A	1-1/2B	160	125	130
50A	2B	170	135	140

### ◆ Material

PART NO.	TITLE	MATERIAL
1	Body	Mat'l Selection
2	Ball	PE, Teflon
3	Packing	NBR, Viton, Teflon
4	Sight Glass	Hard Glass
5	Bolt	SUS304
6	Viewing Cover	AL, SUS304, SUS316

## 유량감시계 (Sight Glass)

### ◆ 표준 규조 및 규격 (Standard Size and Structure)



### ◆ Dimension

SIZE		L1	H	ØF
10A	1/2B	160	145	90
15A	3/4B	160	145	90
25A	1B	170	145	90
32A	1-1/4B	200	160	100
40A	1-1/2B	200	160	130
50A	2B	220	185	140
65A	2-1/2B	270	210	160
80A	3B	270	210	190
100A	4B	320	280	220
125A	5B	380	280	270
150A	6B	420	310	330
200A	8B	500	370	380

### ◆ Material

PART NO.	TITLE	MATERIAL
1	Body	Mat'l Selection
2	Ball	PE, Teflon
3	Packing	NBR, Viton, Teflon
4	Sight Glass	Hard Glass
5	Bolt	SUS304
6	Viewing Cover	AL, SUS304, SUS316

유량감시계 (Sight Glass)

**SLD** Series

SLD – Series 모델 선택 (Model Selection Guide)

SLD		
MODEL	CODE	DESCRIPTION
SLD		FLOW GAUGE
Material	A	SS41
	B	SUS304
	C	SUS316
	D	SUS316L
	X	Special [주1]

[주1] 별도협의

## 유량감시계 (Sight Glass)

### SLD Series

#### ◆ 개요

이 유량계는 압력 손실 없이, 측정 방향에 상관없이 유체의 흐름을 감시할 수 있는 구조로 되어 있으며, 유량감시계 설치로 인한 압력 손실이 없다는 장점을 가지고 있고, 또한 사용 유체에 따라 다양한 재질로 제작이 가능합니다.

#### ◆ 표준 사양 및 특징

1. 최고 사용압력 : MAX. 7 kgf/cm<sup>2</sup>G
2. 최고 사용온도 : MAX. 100℃

#### ◆ 사용재질(Material used)

Refer to Material Selection Guide

#### ◆ Description

This flow gauge can be designed with various materials fitted in the fluid, and no pressure loss, and monitor the flow at any directions.

#### ◆ Features

1. MAX. Operating Pressure : 7 kgf/cm<sup>2</sup>G
2. MAX. Operating temperature : 100℃

